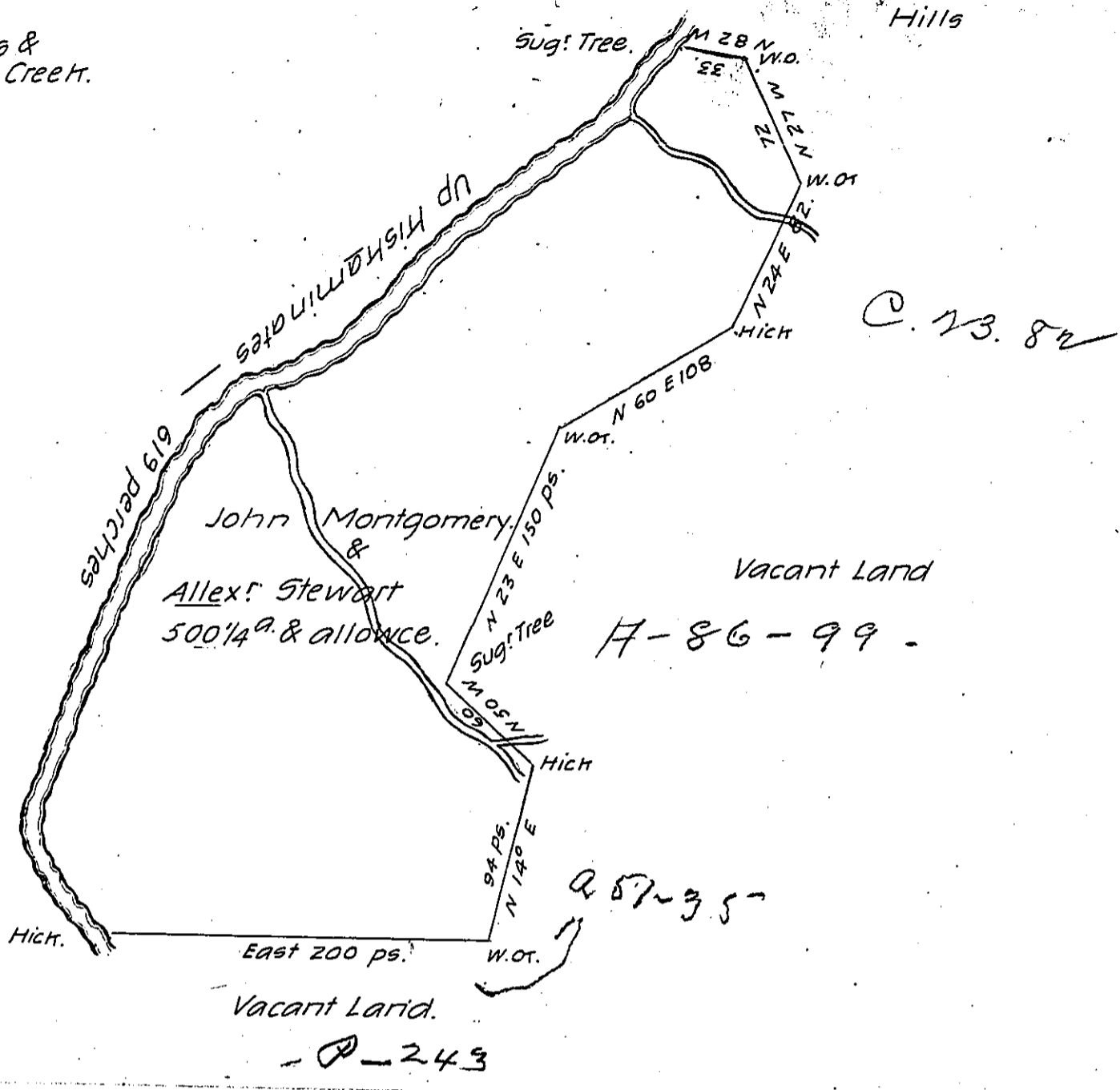


The several Courses & Distances on the Creck.

- S. 30° W. 35 ps.
- S. 61 W. 64.
- S. 53 W. 46.
- S. 41. W. 62.
- S. 57. W 113.
- S. 30. W. 46.
- S. 5. W 176.
- S. 9. E. 27
- S. 36 E 50
- 619 P.



"Warrans Sleeping-Place", Survey'd to John Montgomery Esqr. & Alexr. Stewart, on the 22d day of March 1769; Situate on Hickamintates - Containing Five Hundred acres & a Quarter & the usual allowance of Six P. Ct & C. By application of the 9th day of Feby. 1769 No. 14.

Joshua Elder D.S.

To Jno. Lukens Esqr. S. Genl.

IN TESTIMONY that the above is a copy of the original remaining on file in the Department of Internal Affairs of Pennsylvania, made conformably to an Act of Assembly approved the 16th day of February, 1833, I have hereunto set my Hand and caused the Seal of said Department to be affixed at Harrisburg, this twenty-sixth day of March 1906

Geo. D. ...
 Secretary of Internal Affairs.